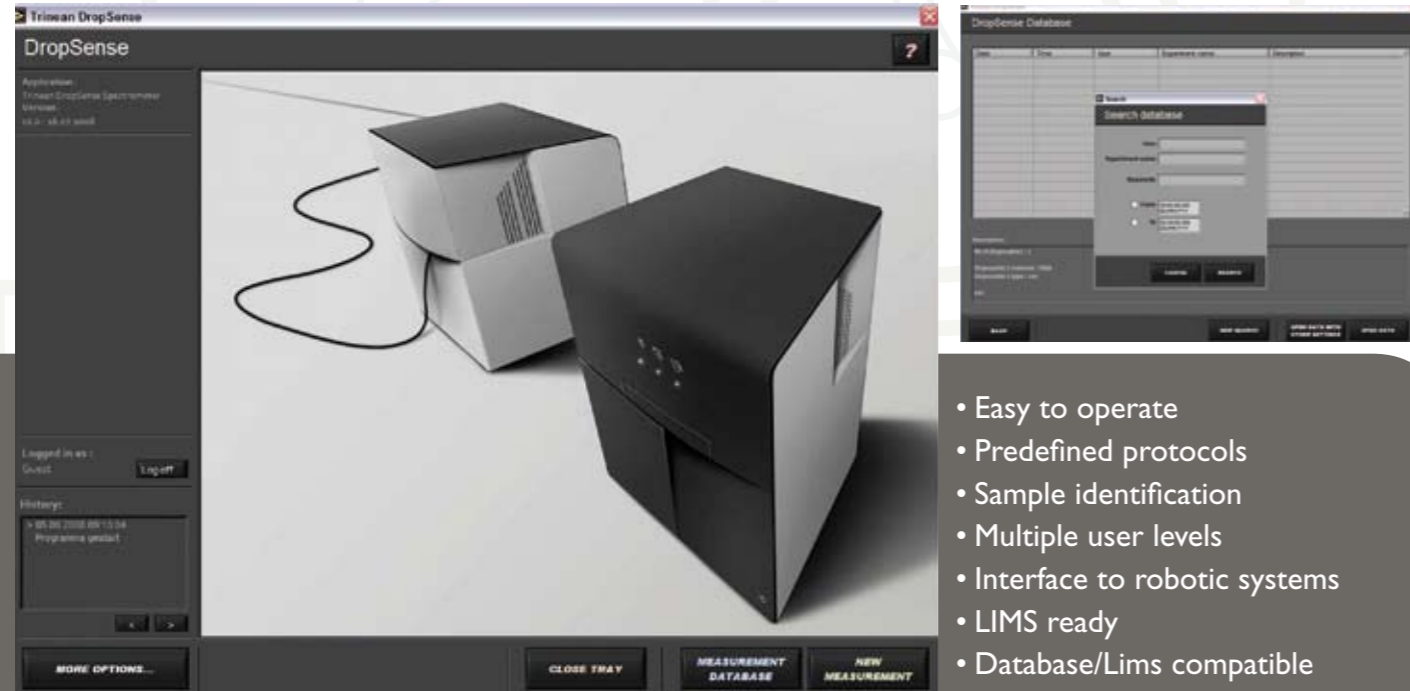


User Interface



Specifications:

| | |
|-----------------------------|--|
| Sample size: | 0,5–2,5 microliter |
| Sample number: | 1–16–96 |
| Path lengths: | 0.2mm and 1mm |
| Light source: | Xenon flash lamp |
| Optical system: | 4-channel polychromator + reference channel |
| Wavelength range: | 220–750 nm |
| Wavelength resolution: | 5 nm |
| Wavelength accuracy: | 0,5 nm |
| Wavelength reproducibility: | 0.1 nm |
| Absorbance range: | OD 0.05–90 (10mm equivalent absorbance) |
| Detection limit: | 2 ng/microliter (dsDNA) |
| Maximum concentration: | 3500 ng/microliter (dsDNA) |
| Measurement cycle time: | < 4 minutes for 96 samples |
| Dimensions (footprint): | 34 x 45 x 35 cm |
| Operating voltage: | 24VDC |
| Connection: | USB |
| CE approval: | All units |

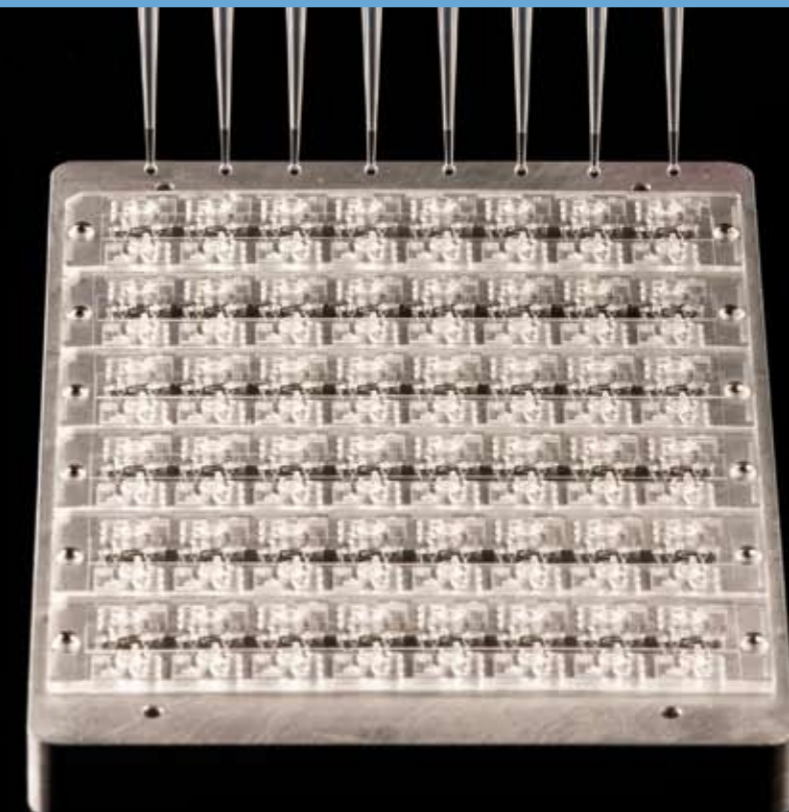
Local dealer:

TRINEAN nv
Dulle Grietlaan 17/3
B-9050 Gentbrugge
Belgium
Phone +32 (9)272 75 35
www.trinean.com
info@trinean.com




trinean

**Minimized samples,
Maximized throughput**



DropSense® 96

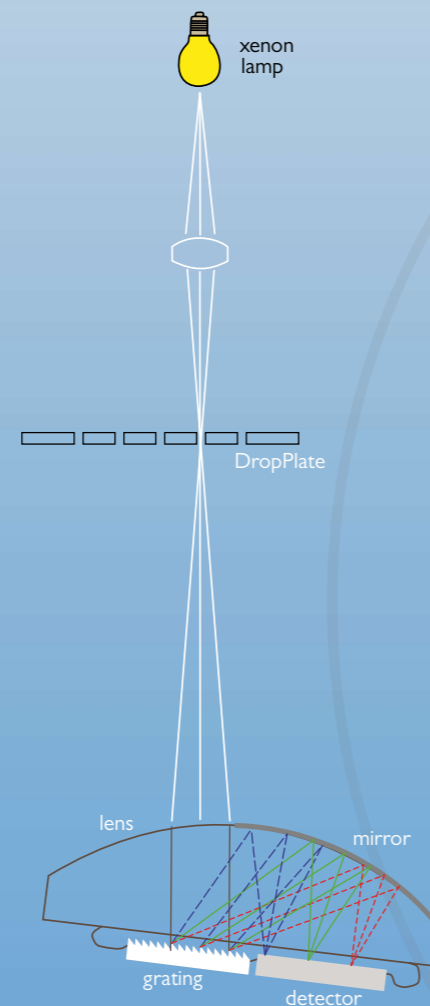
Polychromatic µl plate reader

- Designed for reading DropPlates and microplates
- UV–VIS absorption spectrometry—perfect fit for biomolecule quantification
- Full spectrum in seconds—for multiprobe measurements
- Large dynamic range (2–3500 ng/µl dsDNA)—no need for diluting concentrated samples
- Easy to control—Ready to use
- Predefined methods for DNA/RNA and protein measurements
- High reproducibility—internal lamp compensation
- Full developed software on remote PC

Key Applications

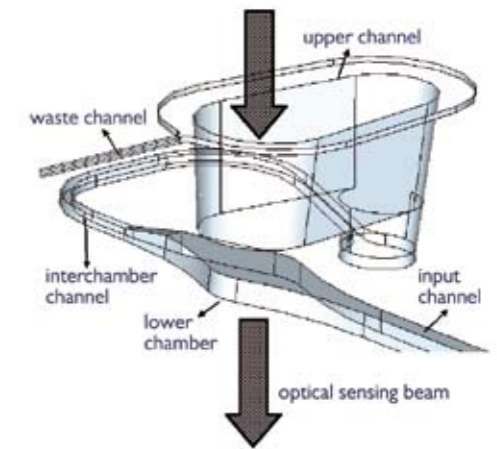
- Determination of **DNA/RNA purity and concentration** in the range of 2–3500 ng/µl (dsDNA) without dilution
- Measuring the **dye labelling efficiency** of micro-array samples

Unique patent pending optical spectrometer design combining cylindrical lenses with integrated optical elements, high resolution gratings and ultra-sensitive photodiode array.



DropPlate® 16/96

- 0.5–2.5 µl sample quantities—minimizing consumption of your samples.
- 16 to 96 sample disposable technology—your route to higher throughput and automation
- Minimized sample evaporation, allowing time and temperature depending assays
- Dynamic range: 2–3.500 ng/µl dsDNA
- No sample dilution needed



Step 1

Fluid is dispensed into input well. Dispensing is done manually or via a liquid handling robot. The chip is not in the DropSense system during dispensing.

Step 2

Fluid is drawn into capillary channel due to capillary action (hydrophilized COC material). The chip is now ready to be loaded into the system. A first optical measurement will be performed to verify the absorption of the chip material. No sample is yet in the optical pathway.

Step 3

First chamber is filled by applying a small vacuum pressure at the evacuation hole above the spill chamber. This pressure is supplied by an external source, integrated in the DropSense system. Another optical measurement is performed

Step 4

Second chamber is also filled (first chamber remains also filled) by applying a higher vacuum pressure. Another optical measurement is performed

